

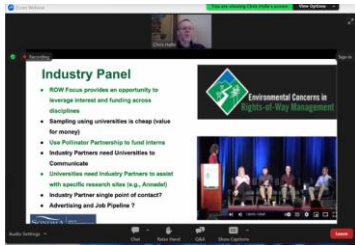
2023 TREE Fund Annual Report



2023 marked the 21st Anniversary of Tree Research and Education Endowment Fund (TREE Fund)'s establishment in 2002 through the merger of the International Society of Arboriculture (ISA) Research Trust and the National Arborist Foundation. Through our programs, we have shown that we remain committed to our mission of identifying and funding programs that support the discovery and dissemination of new knowledge in the fields of arboriculture and urban forestry. 2023 proved to be a great year of interacting with arborists, foresters, and others in the tree care industry and highlights for the year include:

TREE Fund Webinar Series

- Over 5,000 attendees during five webinars
- Over 4,300 CEUs distributed



Deirdre Roden to Everyone 12:50 PM



Many thanks to Dr. Christopher Halle and Drs. Beau Brodbeck and Randy Miller for such a timeless, timely webinar from which, as predictable with Tree Fund, I learned, reviewed and will practice much, to my benefit and to community, environment, sentient animal and plant benefits!



Tour des Trees 2023

- 77 riders
- Over 400 miles in five days,
- Raised over \$365,800
- 23 supporters in virtual event, the 350/350 Challenge

Grants and Scholarships

- Awarded \$1,166,668 in new grants.
- Awarded \$35,000 in new scholarships.
- Paid additional \$1,103,111 for grants awarded in prior years.
- Raised \$154,987 in restricted funds towards future grant endowment.
- Additional \$158,341 for the ongoing State Game Lands 33 project at the end of the fiscal year.

A total of \$5.35 million in grants and scholarships have now been awarded since our inception!





TREE Fund Webinar Series

TREE Fund's Webinar Series, through our partnership with the Alabama Cooperative Extension System of Auburn University, attracted thousands of arborists and others interested in trees from all over the world in 2023, making it the gold standard for educational webinars in the arboriculture field. Speakers featured research funded by TREE Fund grants.

- ▶ Five webinars took place in 2023.
- ▶ Over 5,000 in total attendance.
- ▶ 4,330 CEUs distributed to certified arborists.

Tour des Trees 2023

This year's Tour des Trees bike ride saw a return to pre-pandemic numbers with 77 riders participating, which included 22 first-time riders- on the trek from Reno, Nevada to Half Moon Bay, California.

The week started with a tree planting and proclamation from the City of Reno. The challenges of the route were offset by the beauty of Lake Tahoe and the mountain peaks. In addition to the actual riding of their bikes, riders were able to interact with local tree enthusiasts and TREE Fund partners and learn about the trees and tree care initiatives in the area. They were also able to plant and dedicate several trees along the route and enjoy presentations from Professor Pricklethorn.

This year's Tour raised over \$365,800 for TREE Fund with riders' efforts helped by an additional 23 virtual challenge participants.



Grant and Scholarship Programs

We awarded \$116,668 in new grants and scholarships, paid an additional \$110,311 for grants awarded in prior years, and raised \$154,987 in restricted funds to endow future year grants; an additional \$158,341 was under contract for the ongoing State Game Lands 33 project at the end of the fiscal year; a total of \$5.35 million in grants and scholarships have now been awarded since our inception; full research results and reports since our inception are available on our website at treefund.org.

Ken Ottman Volunteer Award

The Ken Ottman Volunteer of the Year Award is given annually to an individual whose contributions on behalf of TREE Fund are exemplary.

In addition to serving as Treasurer of the TREE Fund Board of Trustees, Jacques Brunswick took on added responsibilities earlier in 2023 during a transition period, essentially serving as TREE Fund's CFO for over half a year. A multiple year Tour des Trees rider, Jacques also helped with the creation of the route creation of the 2024 Tour.

Financials

Statement of Financial Position

	2023	2022
ASSETS		
Cash and cash equivalents	\$ 525,483	\$ 587,483
Accounts receivable		41,968
Pledges receivable, net	65,924	287,273
Prepaid expenses	27,371	3,038
Certificates of deposit	502,541	
Investments	28,872	26,092
Beneficial interest in investments held by Chicago Community Trust	4,872,516	4,413,384
Property and equipment, net	1,048	1,327
Total Assets	\$ 6,023,755	\$ 5,360,565
LIABILITIES		
Accounts payable	\$ 35,953	\$ 30,661
Accrued expenses	13,113	8,089
Deferred revenue	5,938	
Grants payable	270,895	353,124
Total Liabilities	325,899	391,874
NET ASSETS		
Without donor restrictions	(92,097)	(141,703)
With donor restrictions	5,789,953	5,110,394
Total Net Assets	5,697,856	4,968,691
Total Liabilities and Net Assets	\$ 6,023,755	\$ 5,360,565

Statement of Activities

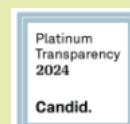
	2023	2022
PUBLIC SUPPORT AND REVENUE		
Contributions	\$ 466,104	\$ 467,979
Special events	391,870	336,138
Contributions of nonfinancial assets	78,089	74,610
Grant management fees	11,867	12,192
Other income	250	1,249
Investment return, net	5,321	(4,575)
Increase in beneficial interest value, net	650,728	(731,737)
Employee retention credit	59,591	
Total public support and revenue	1,663,820	155,674
FUNCTIONAL EXPENSES		
Program services	297,444	613,856
Administrative and general	221,515	169,707
Fundraising	415,696	325,574
Total functional expenses	934,655	1,109,137
CHANGE IN NET ASSETS	729,165	(953,463)
NET ASSETS		
Beginning of year	4,968,691	5,922,154
End of year	\$ 5,697,856	\$ 4,968,691

Notes

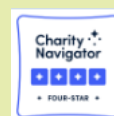
1 - Fiscal year is same as calendar year.
2 - These reflect preliminary audited financials. Complete audited financial statements will be available for public review at treefund.org once approved.

Transparency:

GuideStar:
2024 Platinum Seal of Transparency



Charity Navigator:
4 out of 4 Stars (2024)



2023 Report of Major Gifts

\$50,000 and Greater

Asplundh Tree Expert, LLC

Bartlett Tree Experts

Corteva Agriscience, Agriculture Division of Dow Dupont

International Society of Arboriculture

SavATree

The Davey Tree Expert Company

\$25,000 to \$49,999

FirstEnergy Corp.

KASK America Inc.

PECO Energy, an Exelon Company

\$10,000 to \$24,999

Altec/Styslinger Foundation, Inc.

Arbor Day Foundation

Jacques H. Brunswick and Louise J. Desjardins

Canadian TREE Fund

The Cleveland Foundation

The Mulch Center

Wright Service Corp.

\$5,000 to \$9,999

CNUC

Illinois Arborist Association, Inc.

PacifiCorp

Southern Chapter ISA

Stanley Tree Service

William Tobias

Urban Forest Nursery, Inc.

Vermeer Corporation

West Coast Arborists

Western Chapter ISA

Wisconsin Arborist Association

TREE Fund Corporate Partnership Levels

Crown Partner: \$50,000+

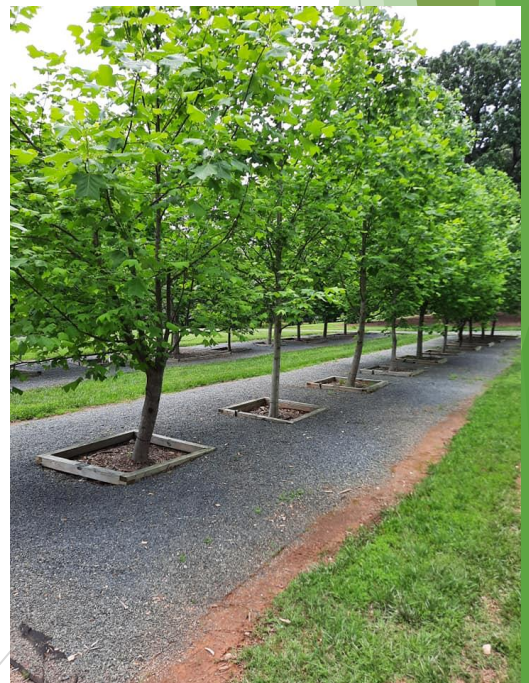
Platinum Partner: \$25,000

Gold Partner: \$10,000

Silver Partner: \$5,000

Bronze Partner: \$2,500

Contact Heath Hupke at hhupke@treefund.org for further information about Corporate Partnership and related benefits



\$2,500 to \$4,999

Anonymous

Anderson's Tree Care Specialists, Inc.

ArborMetrics Solutions, Inc.

Aspen Tree Service

Robert Crow

Stuart and Shirley Crow

Enviro Arbor Solutions

Indiana Arborist Association

Jason Flory

Steven D. Geist

Tom Grant

Jeffrey S. Hamilton

Greg Hill

Theresa L. Williams

Iron Rose Foundation

ISA Rocky Mountain Chapter

Jarraff Industries, LLC

Paul Karpel

Danny Lippi

Mid-Atlantic Chapter ISA

Midwestern Chapter ISA

New England Chapter ISA

New York State Arborists, ISA Chapter Inc.

Ohio Chapter ISA

J. Eric Smith and Marcia Brom Smith

Matt Van Maanen

Sam and Lisa VanMaanen

\$1,000 to \$2,499

Alexandra Akemann

Phil and Judy Allen

Douglas and Linda Anderson

Barnes Tree Service, Inc.

Arthur W. Batson

Board of Certified Safety

Professionals

Patricia A. Chipman

Mark & Kim Crane

Crawford Tree & Landscape

Services, Inc.

Hallie Dozier, PhD

Fidelity Charitable Gift Fund

Shirli A. Flack

Paul F. Fletcher

Florida Chapter ISA

David Patrick Franklin

Robert and Sheila Gansemer

Eugene Gehring

Shirley D. Geist

David Gorden, FASLA

Mr. and Mrs. Michael R. Grimm

Grover Landscape Services

Pamela K. Hendricksen

Alan Hassenfeld

Mary Jo and Ray Henning

Randy D. Hopp

August F. Hoppe

Brian Hughes and Lori

Morris-Hughes

ISA Michigan

Jason and Regna Jones

Warren Jones

Fred Kapp

Ken Smith Workshop

Claudia Kent

Brian R. King

John S. Leffingwell

Michelle M. Lejins

Jen Leman

Daniel Liggett

David P. Liska

Don Lockwood

Barbara and Michael Lupfer

Patrick and Jolynn Mahoney

Elaine M. Mattern

Ryan McElhinney

Randall H. Miller

Richard Mowbray

Pacific Northwest ISA

Scott and Amy Packard

Diane Posnak

Bruno A. Quinson

Fawn Racoma

Ben Rickenbacker

William F. Roemer

Bruce Rogers

Marya M. Ryan

Jonathan Schach

Judy E. Scharfenberger

Derek Scott

Sherrill, Inc.

Todd Shorts

Craig B. Shumaker

Utah Community Forestry Council

Edwin M. Vergason

Thomas T. Wolf

Travis Yordi

\$500 to \$999

Linda Abrojena
American Online Giving Foundation, Inc
Thomas Armstrong and Tammy Wine
Chase Asplundh
Nicholas Baker
Rachel Barker
Ellin Black
Walter Bopp
Michael Burns
Joe Brotherton
Kevin Bryant
Adam D. Camden
Michael Chandler
Craig Christensen
Mr. James R. Clark and Nelda P. Matheny
Royce Clay
Kevin Cleveland
Michael C. Connick
Jenise Crane & Scott Baker
Kirk W. Crecco
Anne Crawford DeZonia
Eric L. Dicken
Mike Earl
Molly Elliott
Rose and Albert Epperson
Paul Filary
Stew Fisher
Flathead Electric Cooperative
David A. and Julia Fleischner
Christopher and Crystal Foster
Jeffrey Fowler
Chris Francis
Brandon Gilbert
Kathleen M. Gilmour and Douglas A. Huneke
Robert Good
Billy Guess
Tim Harbert
Robert J. Heath and Elizabeth L.
Buchanan, PhD
Dan A. Herms, PhD
Kathleen Hull
Kieran Hunt
Grow Trees
Ickes Tree Service

Jeff K. Iles, PhD
Gregory M. Ina
Keven Ireland
Scott A. Jamieson
Gary R. Johnson
Michelle Kelly
Kentucky Arborist Association
Charles Komar
Brian Kralovic
Brian Ledford
Colleen Vallee Legoria
Bethany Lenahan
Kenneth Loar
Luke J. Marshek
Massachusetts Tree Wardens
Gordon Matassa
Tammy McCoy
Jeanne McElhinney
Morbark, Inc.
NOTCH Equipment Team
Kathryn Otlowski
Penn-Del Chapter of ISA
Eric L. Petersen
Alyssa Prazeau
Paul Putman, PhD
Richard Rideout and Debra Cole
Stephani Roberts
Susan Roberts
Rocklin K. Russell
Tina Sapouckey
Paul and Amy Sellers
Ramin Shamshiri
Scott Sholtes
Pete D. Smith
William and Lynda Spiewak
Allen Taylor
Texas Chapter ISA
The Doggett Corporation
Trees R Us Inc.
Derek and Ann Vannice
David Vega
Karen Whitlock
Noelle Wolf
Sara Zeckel

Every donation makes a difference!
In 2023, TREE Fund received an
additional 1,177 gifts ranging from
\$1 to \$499.

*We appreciate the generosity of all
of our donors, and we apologize for
any inadvertent misspellings or
recognition errors; please contact us
with any corrections.*

2023 Grant recipients

TREE Fund is proud to advance its mission of identifying and funding research projects that support the discovery and dissemination of new knowledge in arboriculture and urban forestry. The following projects were awarded TREE Fund grants in 2023:

Jack Kimmel International Grant Program

Dr. Petr Hedeneč, University Malaysia Terengganu.

Title: Light-side of the termites: Distance effect of termite nests on tree growth and pathogen resilience of tree species in Taman Botani at UMT.

John Z. Duling Grant Program

Dr. Thomas Whitney, Davey Institution.

Title: Efficacy of *Aphidoletes aphidimyza* predator releases to control aphid populations on linden street trees

Bob Skiera Memorial Fund Building Bridges Initiative Grant Program

JD Brown, University of Virginia.

Title: Valuing Retention of Mature Trees

Utility Arborist Research Fund Grant Program

Dr. Gregory Dahl, West Virginia University.

Title: Determining failure characteristics from distribution outage reports

Ohio Chapter ISA Education Grant Program

Benjamin Dolan, University of Findlay

Title: Arcadia Arbor-Team

2023 Scholarship recipients

TREE Fund proudly supports the arborists and urban foresters of the future through six scholarship programs that provide \$5,000 worth of financial aid each to students in accredited programs. The following students earned TREE Fund scholarships in 2023:

Bonnie Appleton Memorial Scholarship

Alison Presby, Virginia Tech

Robert Felix Memorial Scholarship

Lauren Thompson, University of Minnesota, Twin Cities

Robert Felix Memorial Scholarship

Peter Murray, Muskegon Community College/ Michigan State University

Larry R. Hall Memorial Scholarship

Jennifer Suszek, College of DuPage

Will Nutter Memorial Scholarship

Taylor Sirois, Bristol County Agricultural High School

Fran Ward Women in Arboriculture Scholarship

Rylie Hannis, Pennsylvania State University- Main Campus

John Wright Memorial Scholarship

Ethan Ramsey, Mid American Nazarene University

For more information on TREE Fund grant and scholarship programs visit www.treefund.org



TREE FUND
Cultivating Innovation

2023 Board of Trustees

Chairman

Arnold Brodbeck, PhD

Chair Elect

Patrick Franklin

Vice Chairman

Rachel Barker

Treasurer

Jacques Brunswick

Trustees

Lori Brockelbank

Jeffrey Edgar

Steve Geist, BCMA, RCA

David Gorden, FASLA

Daniel A. Herms, PhD

Sharon Jean-Philippe, PhD

Gordon Mann

Pete Smith

San VanMaanen

Kathleen L. Wolf, PhD

TREE Fund is a 501(c)3 nonprofit whose mission is to support scientific discovery and dissemination of new knowledge in the fields of arboriculture and urban forestry.

Tree Research and Education Endowment Fund (TREE Fund)

1755 Park Street
Suite 200
Naperville, IL 60563

treefund.org
630-369-8300
treefund@treefund.org

President's Letter

Dear TREE Fund Supporters,

As we reflect on 2023, I am honored to share insights into a year of change at TREE Fund. Our mission, to support scientific discovery and the dissemination of new knowledge in arboriculture and urban forestry, has been our guiding light through a year of significant transition and progress. We hope that in this report and on our website, you see a few key priorities:

Innovative Research and Grants
Expanded Educational Outreach
Enhanced Organizational Capacity

As we look to the future, I am filled with optimism. The transitions of 2023 have prepared us for new opportunities and challenges. We are focused on rekindling and strengthening our partnerships with industry leaders, corporations, nonprofits, and other stakeholders.

On a personal note, during my initial months with TREE Fund I have been overwhelmed by the generosity and welcoming spirit of the tree care community. Thank you to our donors, partners, and volunteers for your unwavering support and dedication. Your commitment to TREE Fund's mission makes our work possible. Together, we are making a lasting impact on arboriculture and urban forestry, ensuring healthier trees and greener communities for generations to come.

With thanks,
Paul Putman, PhD
President/CEO