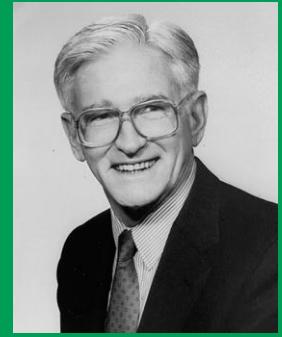




RESEARCH GRANT FUND REPORT 2025

Asplundh – Hyland Johns Endowed Research Fund Grant Program

ASPLUNDH



Established in 1995 to honor one of the leaders in the arboriculture industry and a founder of the ISA Research Trust, the Asplundh - Hyland R. Johns Endowed Research Grant Program funds longer term research and technology transfer projects that have the potential of benefiting the everyday work of arborists.



TOTAL DONATIONS

January 1 – December 31, 2025: \$161,268.02

Gifts over \$500

- Asplundh Tree Expert, LLC
- International Society of Arboriculture



AWARDED IN 2025

The Asplundh – Hyland R. Johns Endowed Research Fund Grant was not awarded in 2025. It is on hold until 2026.

1

COMPLETED RESEARCH

2021 Recipient: Dr Richard J Hauer
 “Tree Health Implications of Long-term Strategies to Treat Emerald Ash Borer: Long-term Effects on Tree Injections and Tree Tissue”
 Final Report - <https://treefund.org/archives/21117>

2

COMPLETED RESEARCH

2024 Recipient: Stella Dee
 “Assessing the Mechanical, Physiological and Carbon Accounting Effects of Different Pruning Regimens”
 Final Report - <https://treefund.org/archives/23143>
 Completed in 2025

TREE Fund Webinar in December 2025 -
<https://www.youtube.com/watch?v=L-DMOSoWhIU> with 1,207 people in attendance

Endowment Announcement

Asplundh’s Chief Operations Officer David Fleischner delivered the endowment announcement at the Trees & Utilities Conference on September 10. Over the next three years, Asplundh will donate \$500,000 to the fund in time for it to be fully endowed before the company’s centennial in 2028. During this time, the fund will continue to award grants.

“Hyland Johns was instrumental in establishing that relationship and making sure it thrived in ways that have proven to be a benefit to the entire industry. Ensuring that this grant-making fund will always have the capital to support arboricultural research is a fitting way to honor Hyland’s legacy and mark Asplundh’s upcoming centennial.”

- David Fleischner, COO, Asplundh

